



A Novel *De Novo* Missense Mutation in *HNF4A* Resulting in Sulfonylurea-Responsive Maturity-onset Diabetes of the Young

Sezer Acar¹, Ayhan Abacı¹, Korcan Demir¹, Taha Reşid Özdemir², Berk Özyılmaz², Ece Böber¹

¹Dokuz Eylül University Faculty of Medicine, Department of Pediatrics, Division of Pediatric Endocrinology, İzmir, Turkey

²University of Health Sciences, İzmir Tepecik Training and Research Hospital, Clinic of Medical Genetics, İzmir, Turkey

ABSTRACT

Maturity-onset diabetes of the young (MODY) is a monogenic form of diabetes, with autosomal-dominant inheritance, which usually develops before 25 years of age. MODY is classically caused by a heterozygous mutation of genes known to affect insulin production or secretion. Heterozygous inactivating hepatocyte nuclear factor 4A (*HNF4A*) mutations, one of the rare subtypes of MODY, cause impaired insulin secretion and subsequent glucose intolerance especially in adolescence. Conversely, *HNF4A* mutations are also known to be associated with macrosomia and hyperinsulinemic hypoglycemia in newborns. Herein, we report a rare cause of diabetes resulting from a novel heterozygous mutation in the *HNF4A* gene. In conclusion, genetic testing should be considered in order to establish an accurate diagnosis and provide an opinion in determining the appropriate type of treatment.

Keywords: Maturity-onset diabetes of the young Type I, macrosomia, *HNF4A*, monogenic diabetes, child

Introduction

Maturity-onset diabetes of the young (MODY) is a monogenic subgroup of diabetes mellitus characterized by autosomal dominant inheritance, non-insulin diabetes onset usually before 25 years of age and decreased insulin production or secretion response to glucose. At least 13 different genes have been reported to be associated with MODY to date (1). Approximately 1-2% of patients with diabetes have a monogenic type (2). The inactivating mutations in the nuclear transcription factor 1 homeobox A (*HNF1A*), the hepatocyte nuclear factor 4 homeobox

(*HNF4A*) and the glucokinase (*GCK*) are the most common causes of MODY (3). Other genes associated with MODY are infrequently detected: *HNF1B*, *IPF*, *NEUROD*, *PDX1*, *KLF11*, *CEL*, *PAX4*, *BLK*, *ABCC8* and *KCNJ11* (3). While the heterozygous inactivating mutations in the *GCK* gene lead to asymptomatic mild fasting hyperglycemia, mutations in the genes of *HNF1A* and *HNF4A* lead to progressive failure in insulin secretion and worsening of glucose tolerance with age (4). *HNF4A* is a member of the steroid/thyroid hormone receptor superfamily and plays a major role in glucose stimulated insulin secretion. Homozygous *HNF4A* mutation is lethal at the early embryonic stage (5). However,

Address for Correspondence

Ayhan Abacı MD, Dokuz Eylül University Faculty of Medicine, Department of Pediatrics, Division of Pediatric Endocrinology, İzmir, Turkey
Phone: +90 232 412 60 80 E-mail: ayhanabaci@gmail.com ORCID ID: orcid.org/0000-0002-1812-0321

This manuscript was presented at the 2nd Endocrine Diseases and Genetic Symposium (23-25 February 2017) as a poster presentation.

Received: 05.04.2017 Accepted: 09.06.2017

©Copyright 2018 by Ege University Faculty of Medicine, Department of Pediatrics and Ege Children's Foundation
The Journal of Pediatric Research, published by Galenos Publishing House.

heterozygous *HNF4A* mutations have a Janus effect on glucose metabolism, which leads to either macrosomia and hyperinsulinemic hypoglycemia during infancy or MODY Type I in adulthood (6). The mutations of the genes involved in MODY are typically inherited from affected parents. However, a few *de novo* mutations have also been reported to date (4,7). In this study, we report on an interesting patient with MODY Type I that resulted from a novel and *de novo* mutation in the *HNF4A* gene.

Case Report

A 14-year-old girl was referred to our outpatient clinic due to fatigue and polyuria; and hyperglycemia was detected afterwards. She was born full term after an uneventful pregnancy with a birth weight of 5.500 gr [4.9 standard deviation (SD) score]. Her parents were healthy and there was no consanguinity between them. The family history revealed no diabetes. Physical examination of the case revealed a height of 163 cm (SD score 0.29), weight of 64.7 kg (SD score 1.2) and body mass index (BMI) of 24 kg/m² (SD score 1.2). Acanthosis nigricans or stria was not found. A puberty examination according to the Tanner scale was stage 5 and she had a regular pattern of menstrual periods. On admission, laboratory analyses showed hyperglycemia, a relatively low level of C-peptide, elevated glycated hemoglobin (HbA1c), a low level of triglycerides and negative autoantibodies regarding diabetes (Table I). Urine analysis revealed 2+ glycosuria and no ketosis. The parents had normal fasting blood glucose

Parameters	Patient value	Normal range
Glucose (mg/dL)	137	60-100
Total cholesterol (mg/dL)	137	<170
Triglyceride (mg/dL)	38	<150
LDL-cholesterol (mg/dL)	87	<130
HDL-cholesterol(mg/dL)	42	>45
C-peptide (ng/mL)	1.66	0.9-7.1
Hemoglobin (gr/dL)	12.8	12-15.6
Glycated hemoglobin (HbA1c) (%)	8.8	4-6.0
Anti-thyroid peroxidase (IU/mL)	0.9	0-9
Anti-thyroglobulin (IU/mL)	1.1	0-4
Anti-tissue transglutaminase (U/mL)	1.8	0-20
Anti-insulin antibody (%)	6.2	<8.2
Glutamic acid decarboxylase (IU/mL)	0.26	0-10
Islet cell antibody	Negative	Negative

HDL: High-density lipoprotein, LDL: Low-density lipoprotein

and HbA1c levels. These findings indicated a most probable diagnosis of MODY. We initiated an insulin glargine only treatment (0.2 unit/kg/day). Postprandial hyperglycemia was rarely observed and no significant hypoglycemia was seen with this treatment. HbA1c decreased to 6.3%.

Molecular Analysis

Genomic DNA was extracted from peripheral blood leukocytes of the patient and her parents by using MagNA Pure LC DNA Isolation Kit I (Roche Diagnostics, Mannheim, Germany) according to the manufacturer's protocol. All coding exons and exon-intron boundaries of the *HNF4A* gene were amplified by polymerase chain reaction (PCR). After purification of PCR products, mutational analysis was performed by direct sequencing of the coding exons and flanking introns of the *HNF4A* gene in an ABI PRISM 3500 genetic analyzer (Applied Biosystems, Foster City, California, USA). As a reference sequence, NM_175914 (obtained from GenBank accession number) for HNF4A was used. While the father and mother had no mutation, analysis of the patient revealed a p.C93Y (c.278G>A) heterozygous novel change in the third exon of *HNF4A* (Figure 1). This missense mutation was not found in the Ensembl and Human Gene Mutation Database (HGMD). It was interpreted to be "disease causing" by the Mutation Taster Software (test score: 0.9999999999999997) (<http://www.mutationtaster.org>). The cysteine residue in position 93 is highly conserved across different species (Figure 2). Insulin treatment was stopped and low-dose sulfonylurea (5.0 mg/day in two doses) initiated as soon as the diagnosis of MODY 1 was made. After five months of the administering, glucose monitoring was within

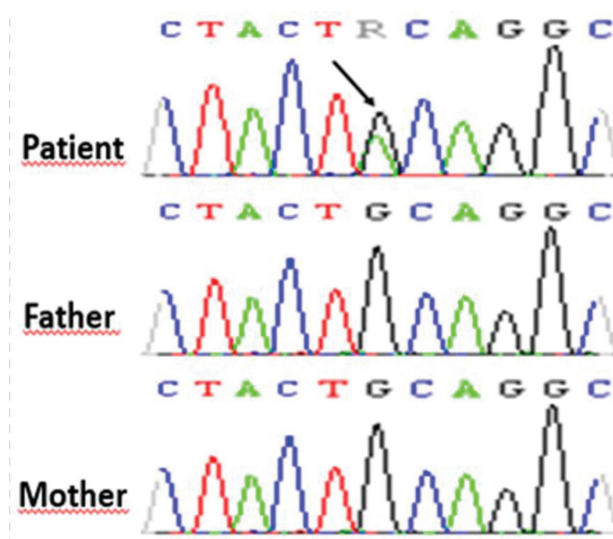


Figure 1. Partial sequence traces for the *HNF4A* gene of the father, mother and patient. Analysis of the patient revealed heterozygous and *de novo* a G-to-A (R=A) substitution (c.278G>A) that changes cysteine to tyrosine amino acid (p.C93Y) in exon 3

Transcript IDs	Species	Amino acid alignments around position 93
ENST00000316673	Human (<i>Homo sapiens</i>)	...VDKDKRNQCRY C RLKKCFRAGMK...
ENSPTRG00000013519	Chimpanzee (<i>Pan troglodytes</i>)	...VDKDKRNQCRY C RLKKCFRAGMK...
ENSMMUG00000006464	Monkey (<i>Macaca mulatta</i>)	...VDKDKRNQCRY C RLKKCFRAGMK...
ENSFCAG00000008178	Cat (<i>Felis catus</i>)	...VDKDKRNQCRY C RLKKCFRAGMK...
ENSMUSG00000017950	House Mouse (<i>Mus musculus</i>)	...VDKDKRNQCRY C RLKKCFRAGMK...
ENSGALG00000004285	Chicken (<i>Gallus gallus</i>)	...VDKDKRNQCRY C RLKKCFRAGMK...
ENSTRUG00000009982	Pufferfish (<i>Takifugu rubripes</i>)	...VDKDKRNQCRY C RLKKCFRAGMK...
ENSDARG00000021494	Zebrafish (<i>Danio rerio</i>)	...VDKDKRNQCRY C RLKKCFRAGMK...
T23H4.2	Nematode (<i>Caenorhabditis elegans</i>)	...VTKNKRACRA C RLQKCVKAGMK...
ENSXETG00000001775	Frog (<i>Xenopus tropicalis</i>)	...VDKDKRNQCRY C RLKKCFRAGMK...

Figure 2. Partial protein alignment of *HNF4A* gene from different species around position 93. The cysteine residue in position 93 is highly conserved. Cysteine is a polar neutral amino acid whereas tyrosine is a polar hydrophilic amino acid. C93Y mutation may change the secondary or tertiary structure of *HNF4A* protein and impair its function

the normal range during sulfonylurea treatment and no hypoglycemia was observed. Laboratory evaluation revealed fasting glucose at 111 mg/dL, insulin at 11 IU/mL, C-peptide at 2.2 ng/mL and HbA1c at 5.8%.

Discussion

GCK and *HNF1A* mutations are responsible for the majority of MODY cases. Of all MODY cases, 20-50% are caused by *GCK* and *HNF1A*, approximately 10% are from a mutation of *HNF4A* or *HNF1B* (3). Studies from our country reported that *GCK* is the most common subtype (9-11). In the present study, we have identified a novel heterozygous G-to-A substitution at 278 position (c.278G>A) that changes cysteine to tyrosine amino acid (p.C93Y) in exon 3 in *HNF4A*, which leads to MODY Type I. Flanagan et al. (8) have reported a different *de novo* *HNF4A* mutation at the same position (p.C93S, c.278 G>C) leading to a diazoxide responsive hyperinsulinemic hypoglycemia that was diagnosed within the first week of life in a patient born with macrosomia (4.100 gr). Our group (9) did not detect *HNF4A* mutations in 42 children diagnosed with MODY, but Ađladiođlu et al. (10) analyzed 43 patients with MODY and identified two cases with the same heterozygous *HNF4A* mutations. One of the cases had a missense mutation (c.416C>T), which is associated with Type II diabetes mellitus in the HGMD. The other patient was carrying both heterozygous *HNF4A* (c.416C>T) and *HNF1A* mutations. As distinct from

those two cases, our case had a *de novo* mutation. Findings of the multicenter study by Stanik et al. (4) underlined that *de novo* mutations of cases with MODY are more frequent than previously assumed. As a result, the authors emphasize the importance of genetic testing for MODY in patients without a family history (4). Thanabalasingham et al. (12) reported that measurable serum C-peptide is valuable in the diagnosis of MODY in individuals diagnosed with diabetes before 30 years of age. Moreover, they speculated that a family history of diabetes, presence or absence of autoantibodies regarding diabetes and metabolic disturbances (e.g. insulin resistance) were less important than previously thought (13). In the present case, the age at onset of diabetes, the negative family history, normal BMI, an absence of autoantibodies to pancreatic cell fragments and a measurable C-peptide level indicated MODY and a novel mutation in *HNF4A* was detected subsequently. Consistent with the literature, this patient was highly responsive to even low doses of sulfonylurea with no hypoglycemia. The majority of MODY Type I individuals are born with macrosomia (>4.000 gr) similar to the offspring of women with diabetes (13). Macrosomia is related to considerable fetal and maternal morbidity (13). In case of maternal diabetes, incremental glucose exposure to the fetus via the placenta results in incremental fetal insulin secretion and macrosomia develops subsequently due to insulin-mediated growth. However, the mother is normoglycemic in cases of *de novo* heterozygous *HNF4A* mutations and

associated fetal macrosomia is thought to be related to a different, yet unknown mechanism. *HNF4A* mutations are thought to have dual opposite roles in insulin secretion from beta cells (13). While these mutations usually lead to increased insulin secretion and subsequent hypoglycemia in newborns (not seen in our case), this effect is switched to impaired insulin secretion in adulthood resulting in glucose intolerance. Pearson et al. (5) asserted the underlying etiology of macrosomia in cases with a *HNF4A* mutation is associated with incremental endogenous insulin production. Since they found that 56% of the newborns with a heterozygous *HNF4A* mutation were macrosomic, birth weight was considered to be related with individual genetic characteristics as well as the maternal intra-uterine environment (6). All in all, *HNF4A* gene mutation should be considered in differential diagnosis of macrosomic newborns in spite of a negative family history for diabetes or hypoglycemia. Unlike MODY 2 cases, progressive hyperglycemia becomes evident in individuals of MODY 1 and MODY 3. Therefore, besides dietary treatment, they frequently require pharmacotherapy such as sulfonylureas, which usually allows for better glycemic control especially in children and young adults (4,7,14). It is well known that MODY 1 and MODY 3 cases are likely to develop microvascular complications at a similar rate compared with those of Type I or II diabetes (14). We switched the treatment of our case from insulin to sulfonylurea (glibenclamide 5 mg/day, b.i.d) when the diagnosis of MODY 1 was genetically proven. In follow-up, glycemic control was better and no hypoglycemia was observed. The transcription factor of *HNF4A* is an activator of genes involved in the control of lipid homeostasis as well as glucose metabolism (15). It has been demonstrated that *HNF4A* mutation carriers have low circulating triglycerides and apolipoprotein concentrations (16). In line with this, in another study, it was shown that a *HNF4A* knockout mouse had reduced fasting serum levels of total cholesterol, high-density lipoprotein, triglycerides and apolipoprotein (16). Our patient, similarly, had low serum level of triglycerides, which suggests an essential role of *HNF4A* in the complex transcription factor network that controls lipid regulation. In conclusion, herein, we described a rare cause of diabetes resulting from a novel and *de novo* heterozygous mutation in the *HNF4A* gene. We emphasize that genetic testing is crucial for both establishing an accurate diagnosis and providing an option to determine whether patients are sensitive to sulfonylurea or not. In addition, we underline that genetic testing of *HNF4A* might be considered for carefully selected patients born with macrosomia without hypoglycemia or a family history of diabetes.

Acknowledgements

This research did not receive any specific grant from any funding agency in the public, commercial or not-for-profit sector.

Ethics

Informed Consent: Consent form was obtained from the patient and her parents.

Peer-review: External and internal peer-reviewed.

Authorship Contributions

Surgical and Medical Practices: S.A., A.A., E.B., Concept: S.A., K.D., T.R.Ö., Design: S.A., B.Ö., A.A., Data Collection or Processing: S.A., K.D., T.R.Ö., Analysis or Interpretation: S.A., A.A., E.B., Literature Search: K.D., B.Ö., Writing: S.A., A.A., K.D.

Conflict of Interest: No conflict of interest was declared by the authors.

Financial Disclosure: The authors declared that this study has received no financial support.

References

1. Chambers C, Fouts A, Dong F, et al. Characteristics of maturity onset diabetes of the young in a large diabetes center. *Pediatr Diabetes* 2016;17:360-7.
2. Shepherd M, Ellis I, Ahmad AM, et al. Predictive genetic testing in maturity-onset diabetes of the young (MODY). *Diabet Med* 2001;18:417-21.
3. Ellard S, Bellanné-Chantelot C, Hattersley AT; European Molecular Genetics Quality Network (EMQN) MODY group. Best practice guidelines for the molecular genetic diagnosis of maturity-onset diabetes of the young. *Diabetologia* 2008;51:546-53.
4. Stanik J, Dusatkova P, Cinek O, et al. De novo mutations of GCK, HNF1A and HNF4A may be more frequent in MODY than previously assumed. *Diabetologia* 2014;57:480-4.
5. Pearson ER, Boj SF, Steele AM, et al. Macrosomia and hyperinsulinaemic hypoglycaemia in patients with heterozygous mutations in the *HNF4A* gene. *PLoS Med* 2007;4:e118.
6. Roženková K, Güemes M, Shah P, Hussain K. The Diagnosis and Management of Hyperinsulinaemic Hypoglycaemia. *J Clin Res Pediatr Endocrinol* 2015;7:86-97.
7. Pearson ER, Pruhova S, Tack CJ, et al. Molecular genetics and phenotypic characteristics of MODY caused by hepatocyte nuclear factor 4alpha mutations in a large European collection. *Diabetologia* 2005;48:878-85.
8. Flanagan SE, Kapoor RR, Mali G, et al. Diazoxide-responsive hyperinsulinemic hypoglycemia caused by *HNF4A* gene mutations. *Eur J Endocrinol* 2010;162:987-92.
9. Anık A, Çatlı G, Abacı A, et al. Molecular diagnosis of maturity-onset diabetes of the young (MODY) in Turkish children by using targeted next-generation sequencing. *J Pediatr Endocrinol Metab* 2015;28:1265-71.
10. Ağıladioğlu SY, Aycan Z, Çetinkaya S, et al. Maturity onset diabetes of youth (MODY) in Turkish children: sequence analysis of 11 causative genes by next generation sequencing. *J Pediatr Endocrinol Metab* 2016;29:487-96.
11. Haliloglu B, Hysenaj G, Atay Z, et al. GCK gene mutations are a common cause of childhood-onset MODY (maturity-onset diabetes of the young) in Turkey. *Clin Endocrinol (Oxf)* 2016;85:393-9.

12. Thanabalasingham G, Pal A, Selwood MP, et al. Systematic assessment of etiology in adults with a clinical diagnosis of young-onset type 2 diabetes is a successful strategy for identifying maturity-onset diabetes of the young. *Diabetes Care* 2012;35:1206-12.
13. Chauhan SP, Grobman WA, Gherman RA, et al. Suspicion and treatment of the macrosomic fetus: a review. *Am J Obs Gynecol* 2005;193:332-46.
14. Rubio-Cabezas O, Hattersley AT, Njølstad PR, et al. ISPAD Clinical Practice Consensus Guidelines 2014. The diagnosis and management of monogenic diabetes in children and adolescents. *Pediatr Diabetes* 2014;15(Suppl 20):47-64.
15. Pearson ER, Pruhova S, Tack CJ, et al. Molecular genetics and phenotypic characteristics of MODY caused by hepatocyte nuclear factor 4alpha mutations in a large European collection. *Diabetologia* 2005;48:878-85.
16. Hayhurst GP, Lee YH, Lambert G, Ward JM, Gonzalez FJ. Hepatocyte nuclear factor 4alpha (nuclear receptor 2A1) is essential for maintenance of hepatic gene expression and lipid homeostasis. *Mol Cell Biol* 2001;21:1393-403.